

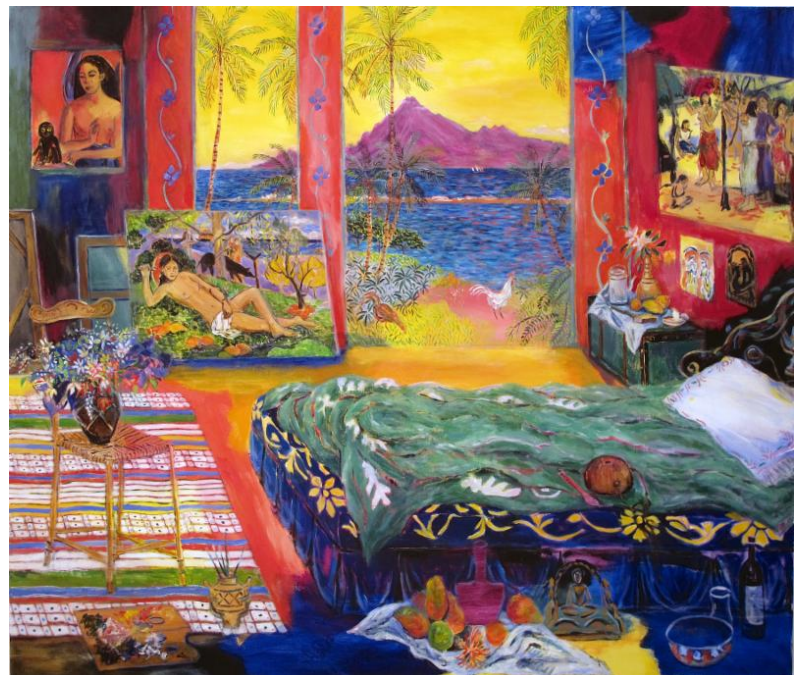
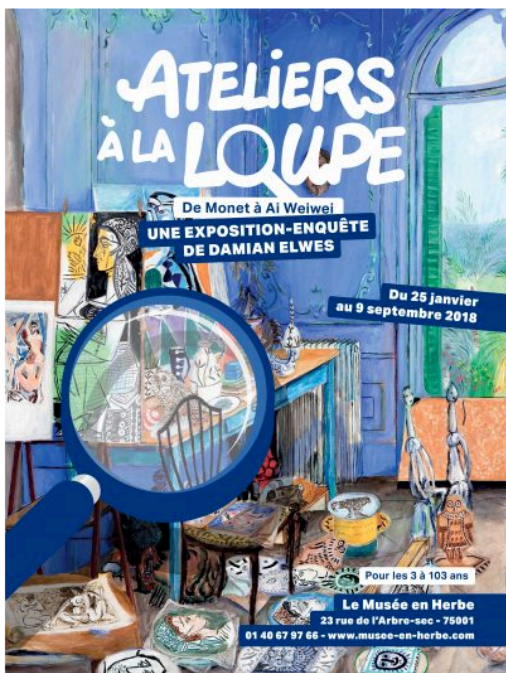


ATELIERS À LA LOUPE

"Damian ELWES: *Atelier à la loupe, From Monet to Ai Weiwei*" retrospective exhibition on view at Le Musée en Herbe, Paris, January 25 - September 9, 2018

The Musée en Herbe in Paris presents here a retrospective of 40 paintings of artists' studios and their portraits. Artist Damian Elwes offers an interactive journey whose destination is the fascinating and creative world of great artists.

From the nineteenth century to today, it's a dive into the heart of the work of Cezanne, Monet, Gauguin and Matisse to name a few. Original works by Picasso, Giacometti, Basquiat and Keith Haring are also on display.



Gauguin's Studio (Tahiti, 1986), 2017, mixed media on canvas